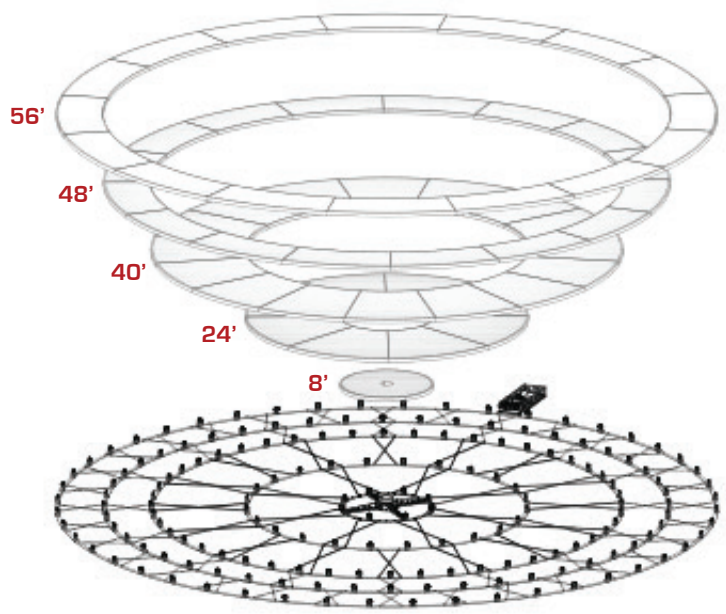
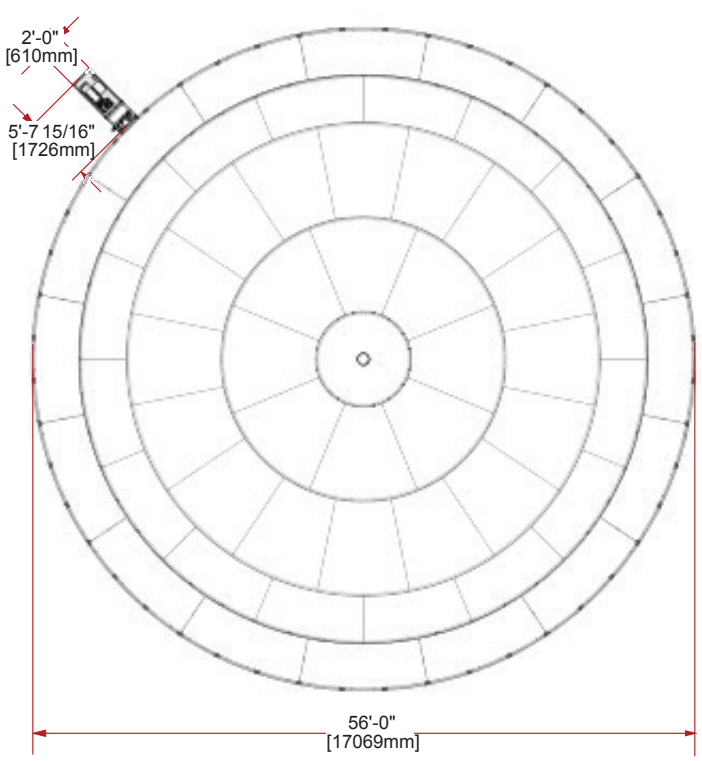


VERSA TURNTABLE

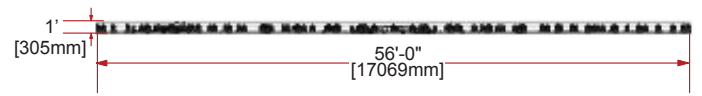
SPECS

- **WEIGHT CAP:** 40,000 LBS [18144 KG]
- **POWER REQ:** 208V [30A], 3 PHASE, 5 WIRE
- **DIRECTIONAL:** FORWARD AND REVERSE
- **VARIABLE SPEED CONTROL**

TOP



FRONT



SIDE

